



# AE-3Ms2

## STAGE MONITOR SYSTEM

### DESCRIPTION:

The AE-3Ms2 stage monitor is optimized for exceptional power and clarity in the vocal range. It produces extremely high acoustic output from a very small and unobtrusive enclosure.

### DRIVER COMPLEMENT:

**LOW FREQUENCY:** One Apogee 10" (254mm) permanent magnet cone-type driver is treated with a waterproofing compound, providing resistance to moisture, and enabling long-term stability of cone resonance and cone mass parameters

**HIGH FREQUENCY:** One Apogee 1" (25mm) horn-loaded compression driver

### INPUT CONNECTORS:

Neutrik™ NL4MP Speakon™ connectors standard; Cannon EP series optional

### COMPATIBLE PROCESSORS:

DLC24 Digital Controller

### HANDLES:

Two handles designed as an integral part of enclosure (no moving parts)

### GRILLE:

Powder-coated, diamond-punched steel with acoustic foam covering

### TRIM:

Protective steel skids on bottom edges; powder-coated for durability

### RIGGING HARDWARE:

Two 12-gauge steel nutplates, mounted on either side, recessed, nominally flush; accepts 3/8"-16 thread (10mm nutplate optional); nutplates are backed with 12-gauge steel internal brackets

### FINISH:

Textured high-strength black epoxy paint; other colors optional

### ENCLOSURE TYPE:

Multi-angle floor monitor, optimally-vented bass

### CABINET CONSTRUCTION:

Multi-ply birch with stainless steel fasteners

### ENGINEERING DATA:

#### FORMAT:

Single-amped/Two-way/Electronically-coupled

#### DISPERSION:

H: 45° x V: 70°

#### FREQUENCY RESPONSE (1M ON AXIS):

70 Hz to 18 kHz ± 3 dB

#### MAX. SPL (@1M):

121 dB cont./127 dB peak

#### PTML (PEAK TRANSIENT MECHANICAL LIMIT):

138 dB

#### SENSITIVITY (1W @ 1M):

99.5 dB/200 Hz to 4 kHz

#### NOMINAL IMPEDANCE:

8 ohms

#### MAX. POWER HANDLING:

300W cont./1200W peak

#### DIMENSIONS:

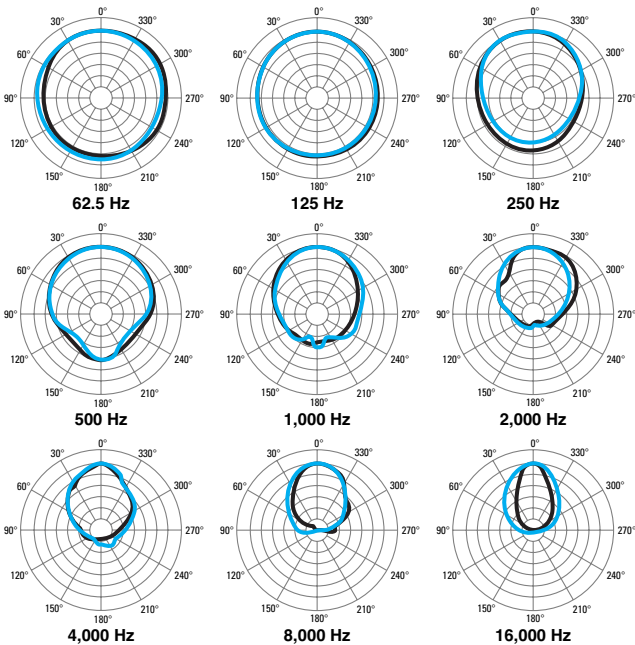
16.25" (413mm) W x 12.5" (318mm) H x  
14" (356mm) D

#### WEIGHT:

36 lb. (16.4 kg)

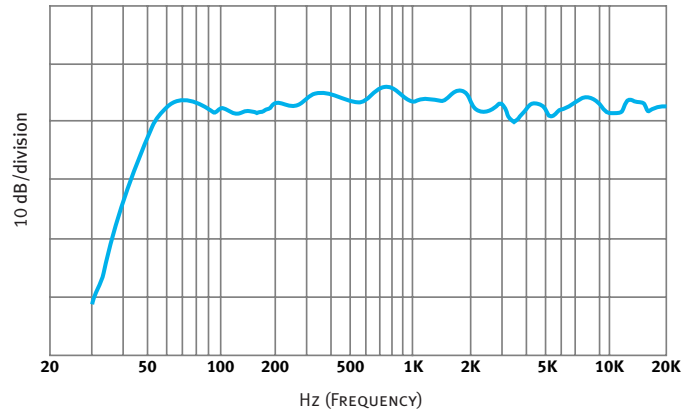
**APOGEE**  
SOUND INTERNATIONAL

## POLAR MEASUREMENTS AE-3Ms2 (6 dB/division, normalized)



**HORIZONTAL** — All polar measurements obtained in a free-field environment at 10° increments.  
**VERTICAL** —

## FREQUENCY RESPONSE AE-3Ms2



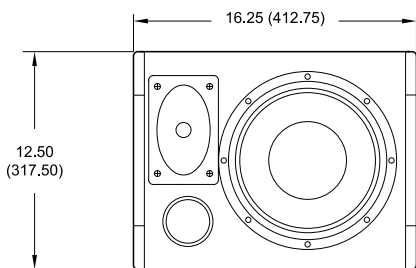
Measured in a free-field anechoic environment using a swept one-third octave input.

### PROCESSOR NOTES:

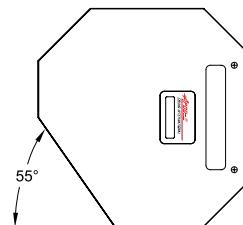
The DLC24 Digital Loudspeaker Controller is a digital engine with an analog surface. It combines the most advanced technology available with intuitive interfaces to provide the key elements that ensure optimal loudspeaker system performance and management in a variety of live sound and fixed installation applications.

The controllers provide factory-set equalization curves to smooth the response, protective limiting, and active crossovers (for bi-amplified models and subwoofers).

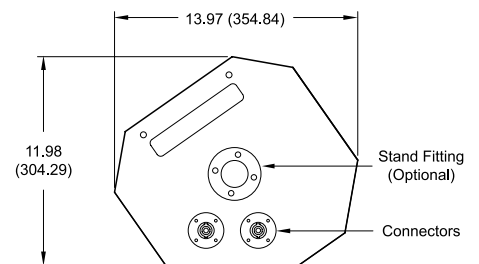
## DIMENSIONAL DRAWINGS AE-3Ms2 (dimensions in inches and millimeters)



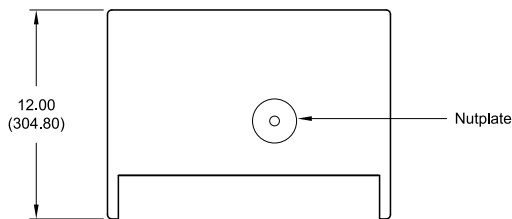
FRONT VIEW  
(WITHOUT GRILLE)



LEFT SIDE VIEW



RIGHT SIDE VIEW



TOP VIEW  
(WITHOUT GRILLE)



50 SPRING STREET, RAMSEY, NJ 07446, USA  
 TEL: 800-443-3979 • FAX: 800-999-9016 • www.apogee-sound.com